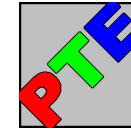
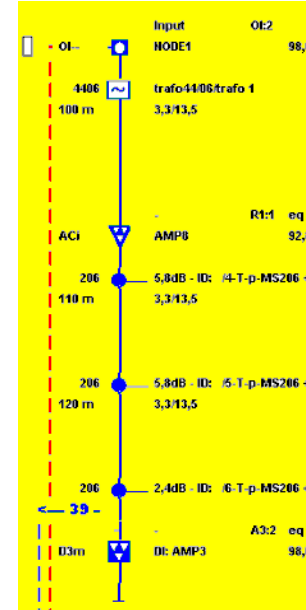


Power Module
 Option for calculation of voltages, current, and power consumption.

Including Graph showing voltages on amplifiers supplied from each transformer

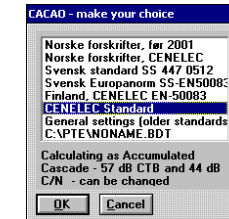


CACAO - CATV Calculation And Optimizing software package
 Developed and used by professional CATV Network Engineers since 1987.



The **CACAO** package contains all you need to calculate and optimize Trunk and Distribution Networks.

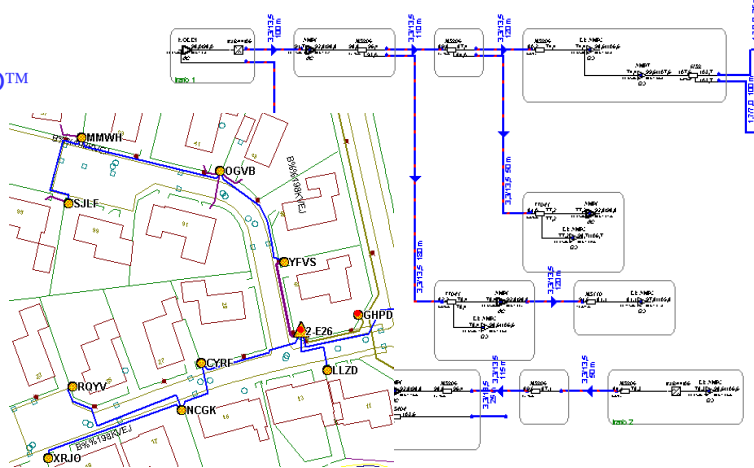
CACAO can be set to whatever calculation standard you like. CENELEC or any other principle/standard



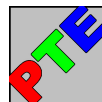
You may even define your own limits for CTB, C/N, Tolerances, signal levels etc.

MICADO digital map integration as option. **CACAO** and **MICADO**

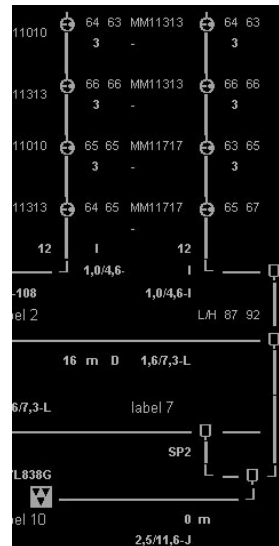
The Ultimate Design and Documentation Tool
 more information on www.micado.no or www.ptesoftware.dk



Price examples in EURO, ex. works for each user,
 CACAO LIGHT 1.115,- EUR
 CACAO TOP 2.145,- EUR
 Power Module, option 415,- EUR
 CACAO TOP + MICADO 6.600,- EUR
 All systems are upgradeable



Peter Thorsen Engineering
 Silkeborgvej 184, DK-8700 Horsens, Denmark
 phone +45 7565 4647 fax +45 7565 4698
 mail pte@software.dk www.ptesoftware.dk



CACAO delivers unique calculation and optimizing and can be upgraded with the **MICADO** software package - Mapinfo Cable Documentation. The solution for total digital map integration (more info on www.micado.no)

The Ultimate Design and Documentation Tool

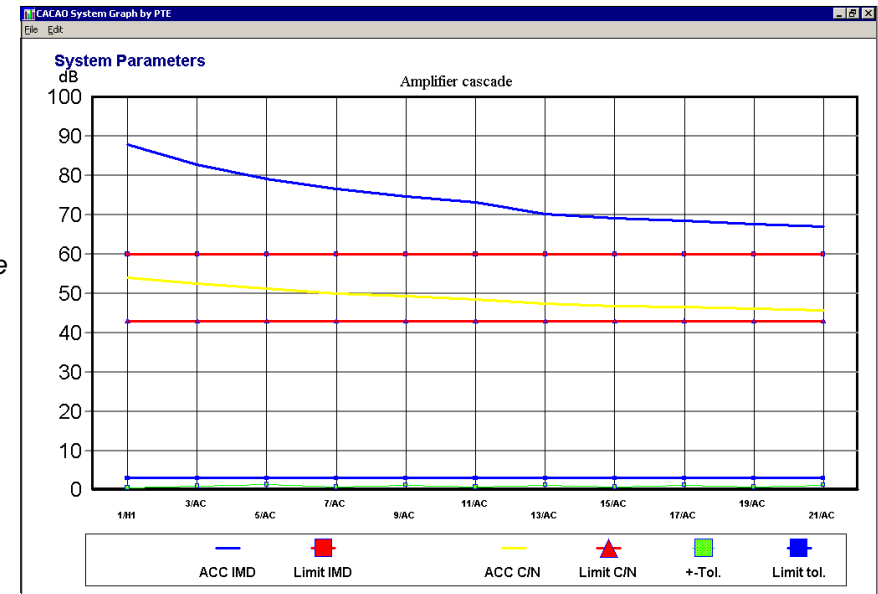
Straight forward line based calculations. Each line can contain an Amplifier, cable, and a passive component. Up to 99 or 148 lines in each file, and files can be linked to each other

PROJECT: POWER project Subscriber def. - Con.: 18 / 18 pos. system calculation: ACCUMULATED CASCADÉ

L	I	N	E	P	REF	G	SIG. LEVEL at frequency	Low	High	CABLE	TYPE	TL-Tap	80 MHz	860	30	10	I	5,8	S	O	80	E	P	IMD C/N		
1	O1:2						98,0	98,0			4406	trafo4406	0,3	99										63,0	48,0	
2							97,8	97,7		10	100	C	6													
3							96,1	91,7																		
4	R1:1	ACi	7				92,8	98,8																	88,9	62,0
5							90,7	96,4		10	110	C	7													
6							86,8	87,4		10	120	C	7													
7							79,4	74,4																		
8	A3:2	D3m	32				98,6	106,6																	71,8	58,0
9																										
10							83,5	84,0		10	50	C	3													
11							79,3	77,2																		
12	R1:8	ACi	22				92,8	98,8																	88,5	61,8
13																										
14							79,3	77,2																		
15	A3:8	D3m	29				98,7	106,7																	71,8	58,1
16																										
17							87,4	93,0		10	180	C	11												88,9	62,0
18							81,1	78,4																		
19	R1:10	ACi	20				92,8	98,8		10	120	C	7												88,5	61,8
20							80,3	81,1																		
21	A3:11	D3m	25				97,8	105,8																	73,2	57,1
22																										
23							81,1	78,4																		
24	A3:13	D3m	28				98,6	106,6																	71,8	58,1
25																										

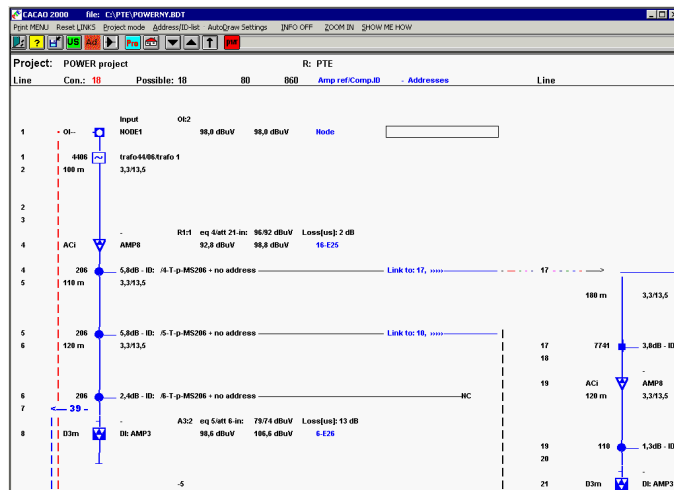
Graph System Parameters

IMD/CTB, C/N, and tolerances. Unilinear curve shows exact where an amplifier with 'wrong parameters' are used



All databases in CACAO[®] are open and can be edited by the user - or you can choose between +600 products included in the Master Database

'AutoDraw' makes block schematic in few seconds



Price calculation including manpower needed

Specified list of materials and time needed for the installation job

PRICE CALCULATION		Price pr. hour					
		COMPONENTS:		kr 285			
		AMPLIFIERS:		kr 365			
LINE	CABLE	Index	PRICE ITEMS	Index	ADD ON	Hours	MOUNTING
1233	[m]	100	kr 18.360	100	kr 183.600		
450	[m]	100	kr 900	100	kr 0		
CABLE IN TOTALS		1683	kr 19.260		kr 183.600		
19	[pcs]	100	kr 0			0,0	kr 0
COMPONENTS							
12	[pcs]	100	kr 0	100	kr 0	8,0	kr 2.920
AMPLIFIERS/OI							
MATERIALS, TOTAL			kr 19.260				
ADD ON'S, TOTAL					kr 183.600		
MOUNTING, TOTAL HOURS & PRICE						8,0	kr 2.920
Extra project related costs:						kr 0	
GRAND TOTAL						kr 205.780	

Price summary

